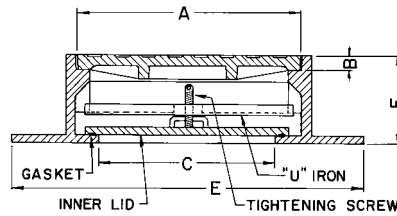


R-1755 Series Gasket-Sealed, Frost and Water-Resistant Frame, Solid Lid and Inner Lid

Heavy Duty

All units furnished with neoprene gasket, tightening bolt and locking bar. Lids are provided with Type F concealed watertight pickhole (see p. 14 for details). Not suitable for use as a pressure manhole.

Security saddle plate available upon request.
When eye bolt is padlocked, saddle plate prevents bolt from being turned so lock bar cannot be removed.

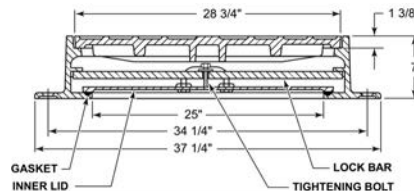


Security Saddle Plate

Catalog No.	Dimensions in inches						Lid
	A	B	C	E	F		
R-1755-B	23	1 1/2	18	36	9		Type B
R-1755-C	24	1 1/2	20	35	7 1/2		Type C
R-1755-E	26	1 1/2	22	38	7		Type C
R-1755-E1	30	1 1/2	24	39 3/16	6 1/2		Type C
R-1755-G	32	1 1/2	28	46	7		Type B
R-1755-G1	32	1 1/2	28	40	6 1/2		Type B

R-1755-F2 Frost/Watertight Frame, Solid and Inner Lid

Heavy Duty



R-1755-F2LM Frost/Watertight LiftMate Frame, Solid Gasketed Lid and Inner Lid

Heavy Duty

Hinge plug available for self-seal application.
See p. 13 for LiftMate information.

